



'ATTACHMENT A – TWILIGHT SERIES COURSES'

To be read in conjunction with the
'2023-2024 FRIDAY AFTERNOON & FRIDAY TWILIGHT SERIES ADDENDUM C'

TIME LIMITS

Pre-Christmas	Race	Time Limit	Post-Christmas	Race	Time Limit
Friday, 7 October 2022	1	19:05	Friday, 14 January 2023	1	20:00
Friday, 14 October 2022	2	19:10	Friday, 21 January 2023	2	20:00
Friday, 21 October 2022	3	19:15	Friday, 28 January 2023	3	20:00
Friday, 28 October 2022	4	19:25	Friday, 4 February 2023	4	20:00
Friday, 4 November 2022	5	19:30	Friday, 11 February 2023	5	19:55
Friday, 11 November 2022	6	19:35	Friday, 18 February 2023	6	19:45
Friday, 18 November 2022	7	19:40	Friday, 25 February 2023	7	19:35
Friday, 25 November 2022	8	19:50	Friday, 4 March 2023	8	19:25
Friday, 2 December 2022	9	19:55	Friday, 11 March 2023	9	19:15
Friday, 9 December 2022	10	20:00	Friday, 18 March 2023	10	19:10
Friday, 16 December 2022	11	20:00	Friday, 25 March 2023	11	19:00

START SIGNALS

Signal	
Warning	Long sound 5 minutes before the start
Preparatory	Short sound signal 4 minutes before the start
One minute	Short sound signal 1 minute before the start
Start	Long sound signal made at the start

START TIMES

Time	Division Warning	Division Start
17:50	4	
17:55	3	4
18:00	2	3
18:05	1	2
18:10	DINGHIES	1
18:15		DINGHIES

DIVISIONS

Division	Pennant
1	Yellow
2	Blue
3	Black
4	Green

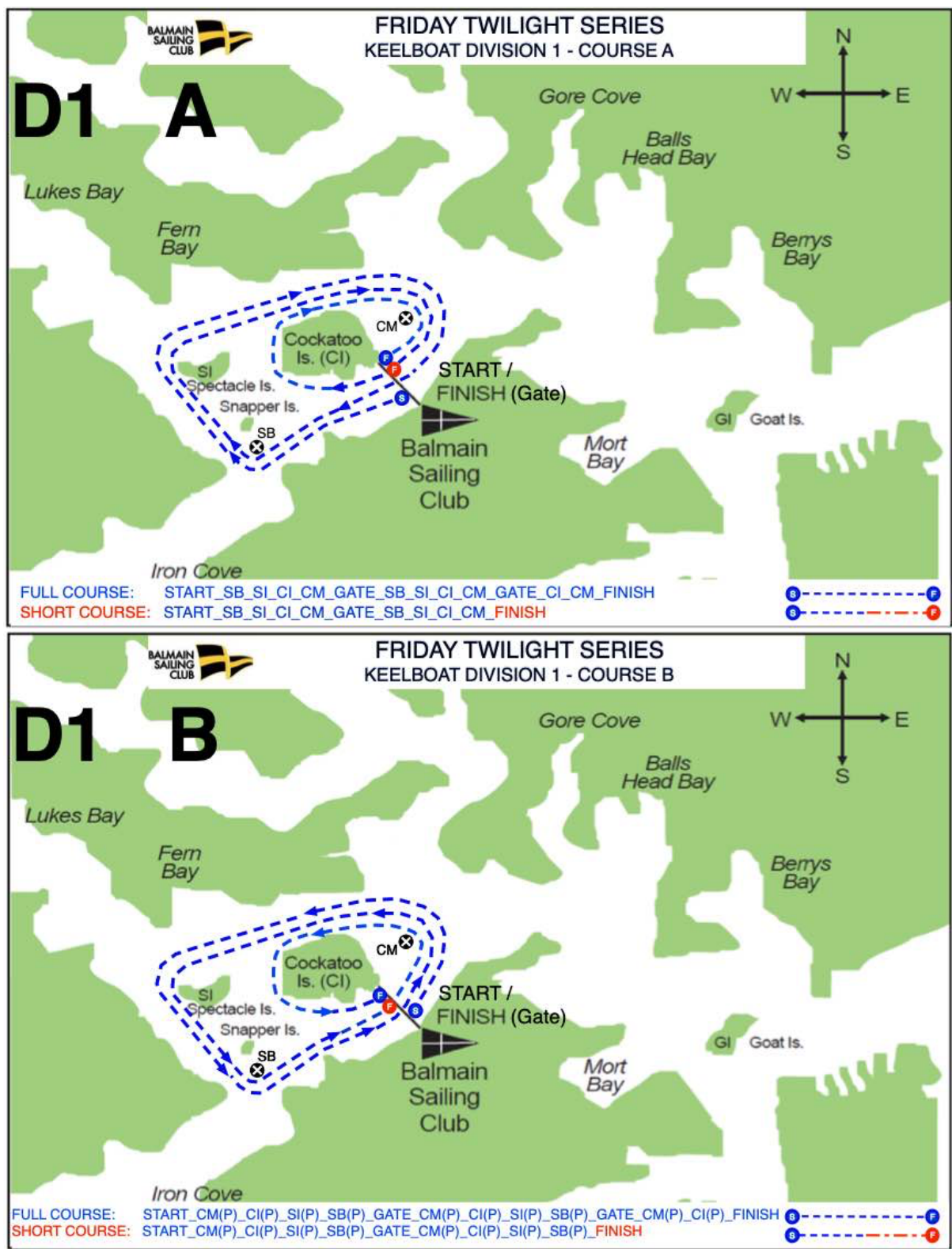
THE RC WILL MONITOR THE RADIO ON VHF CH. 73

CHART OF MARKS

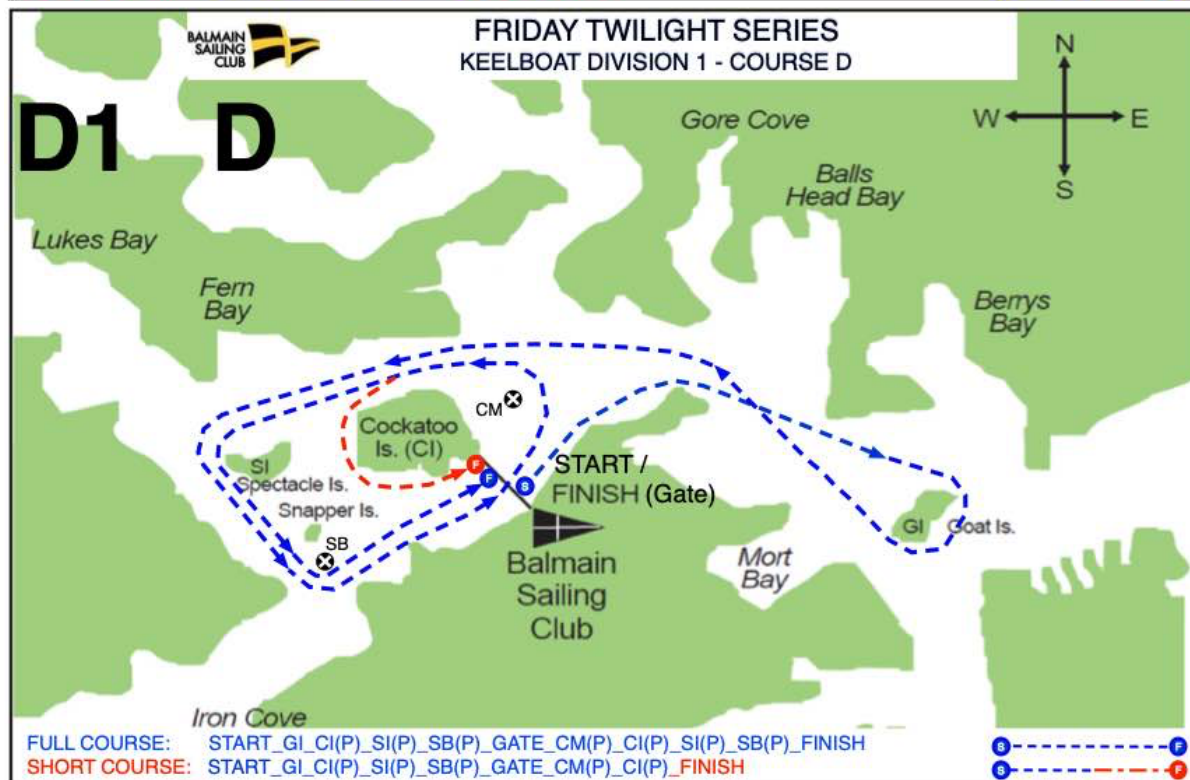
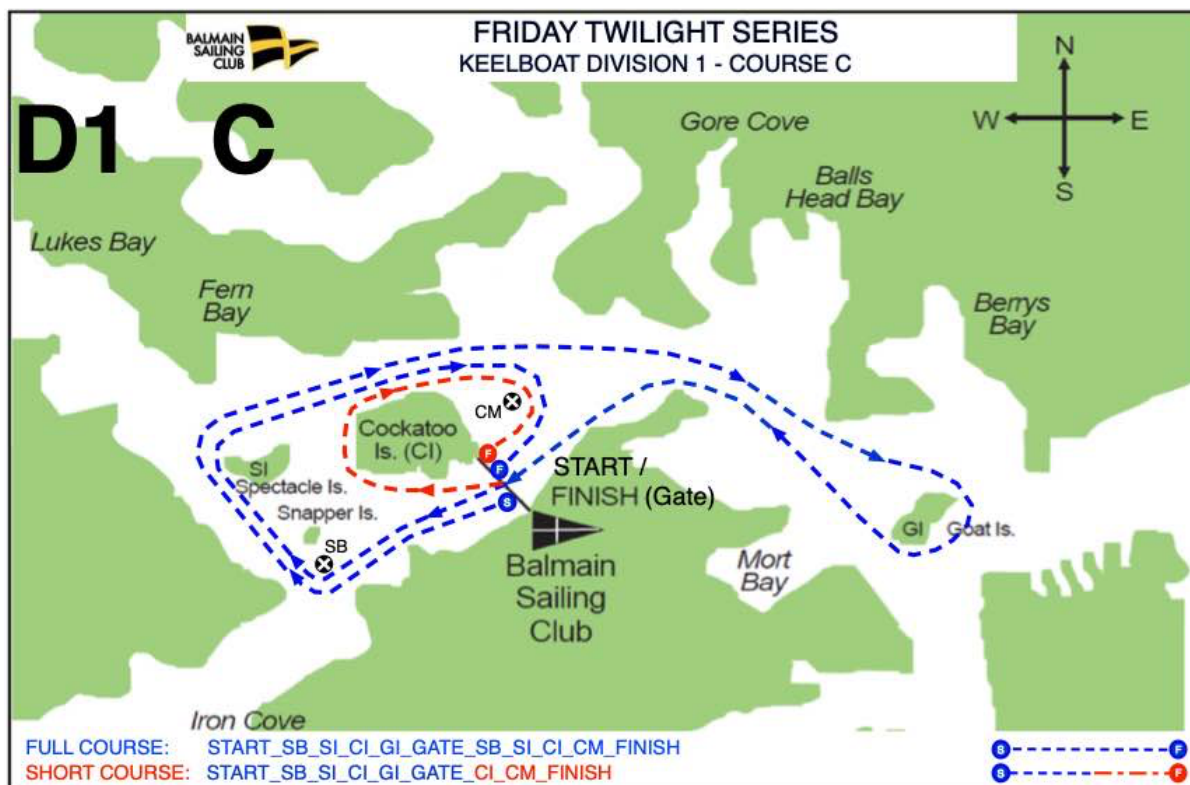


Mark	Description
CI	Cockatoo Island
CM	Laid Mark E of Cockatoo Island
GB	Laid mark W of Goat Island
GI	Goat Island
SB	Laid mark SE of Snapper Island
SI	Spectacle Island

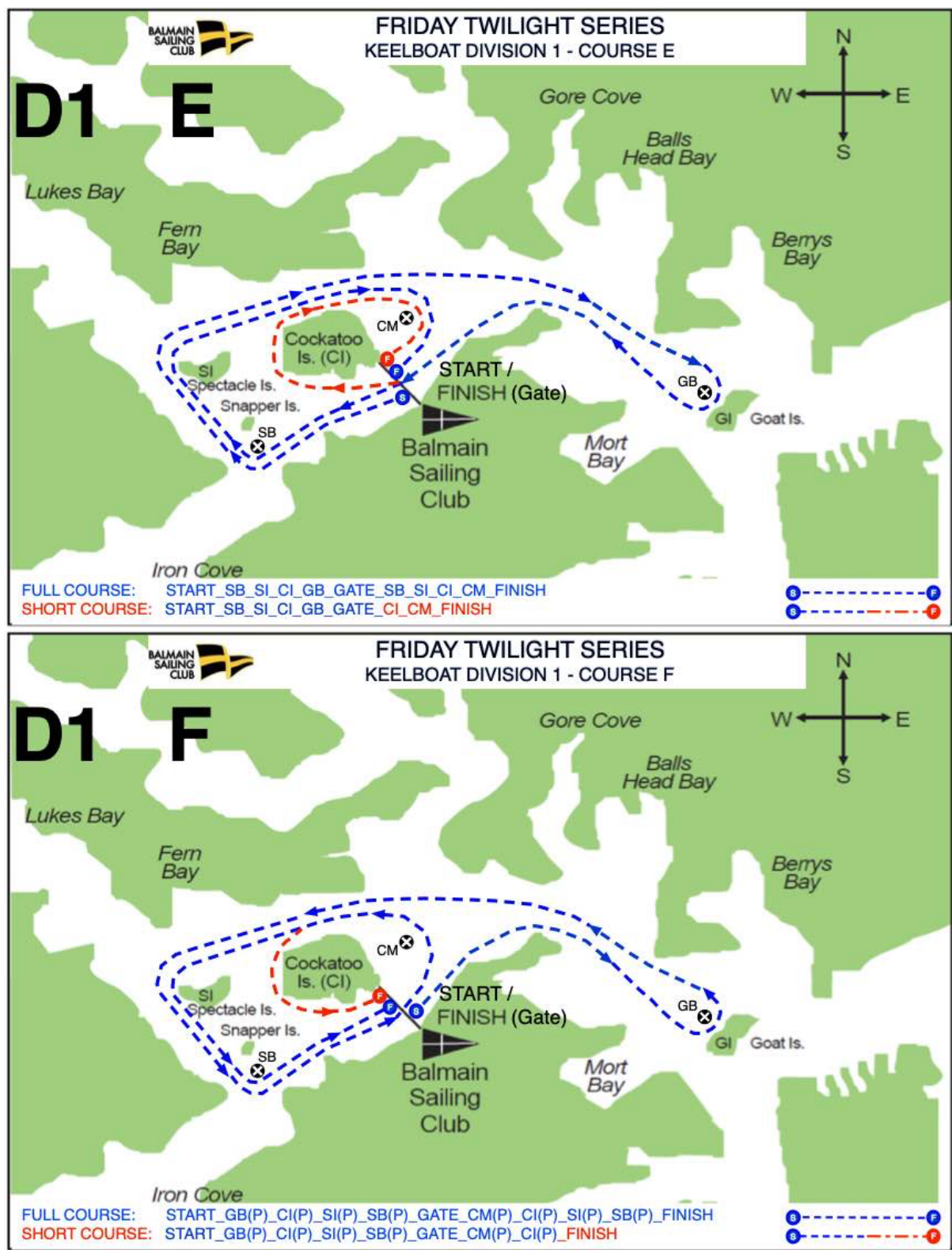
DIVISION 1 – COURSES A & B



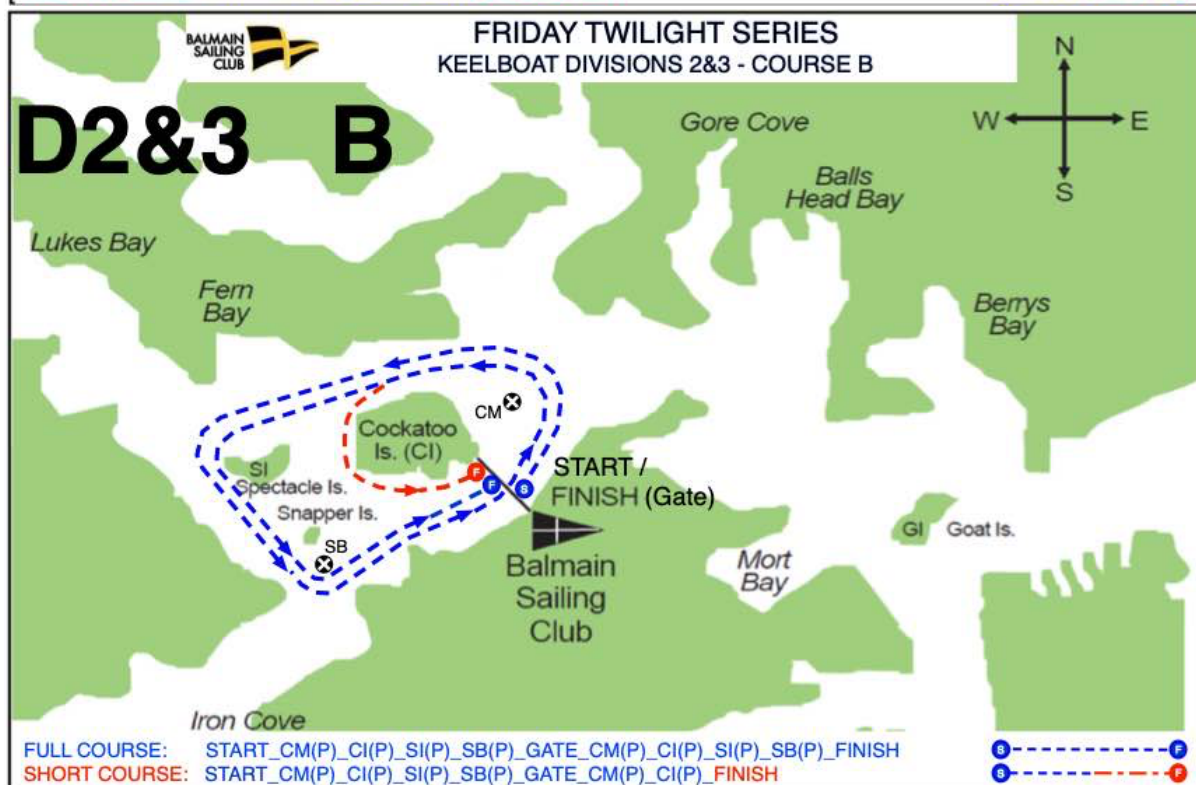
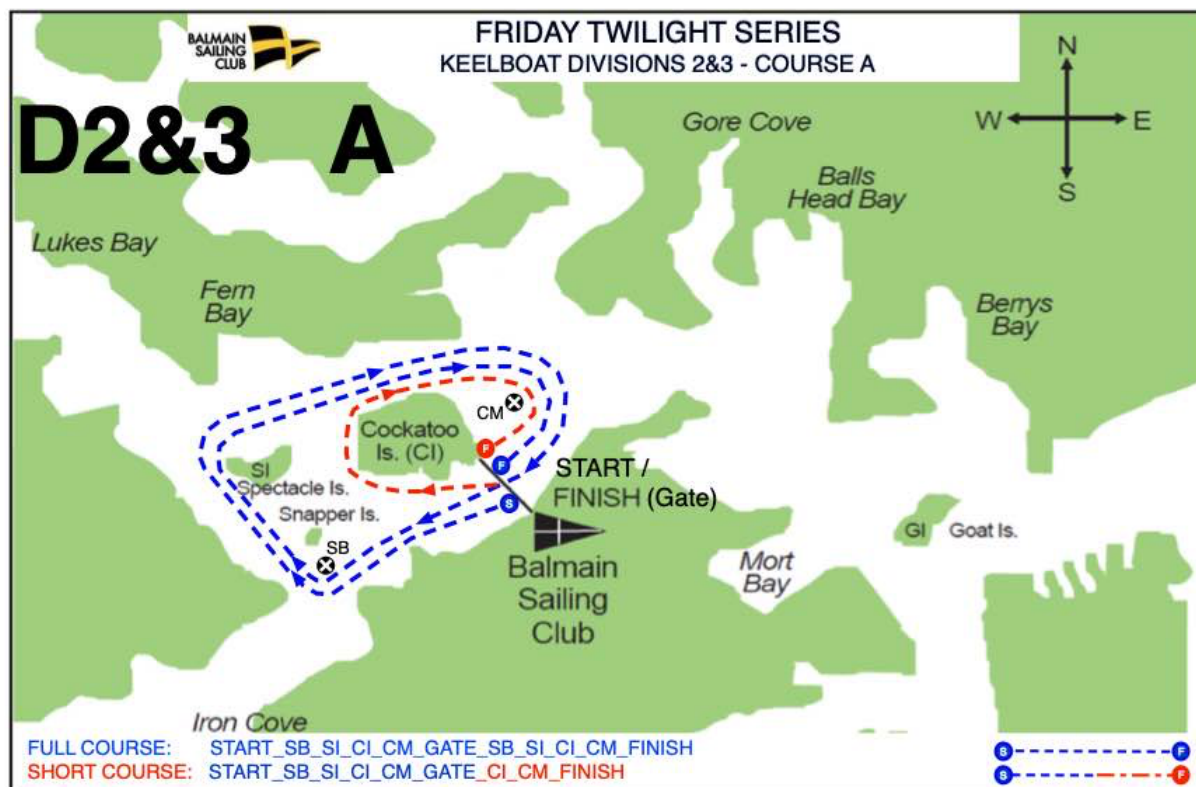
DIVISION 1 – COURSES C & D



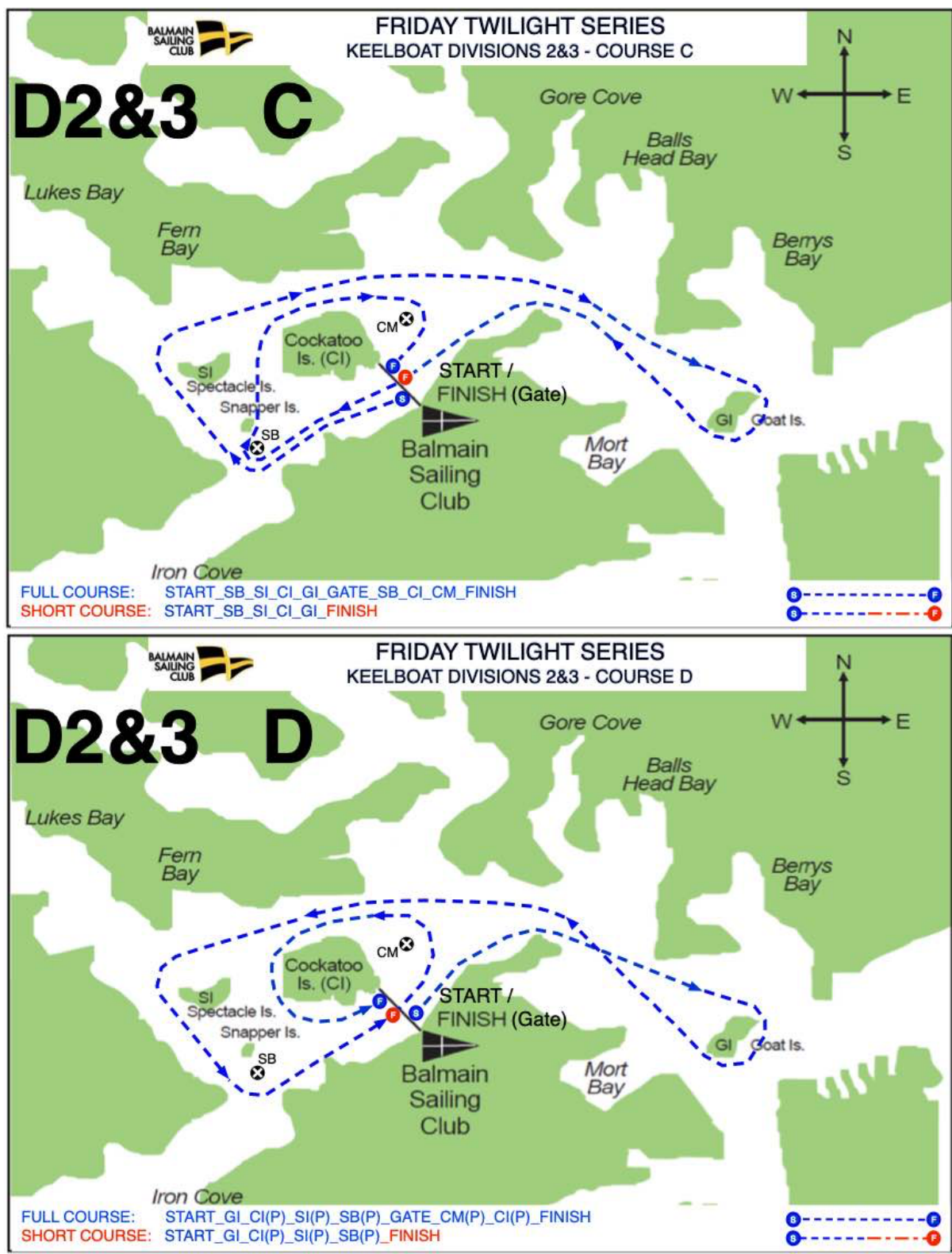
DIVISION 1 – COURSES E & F



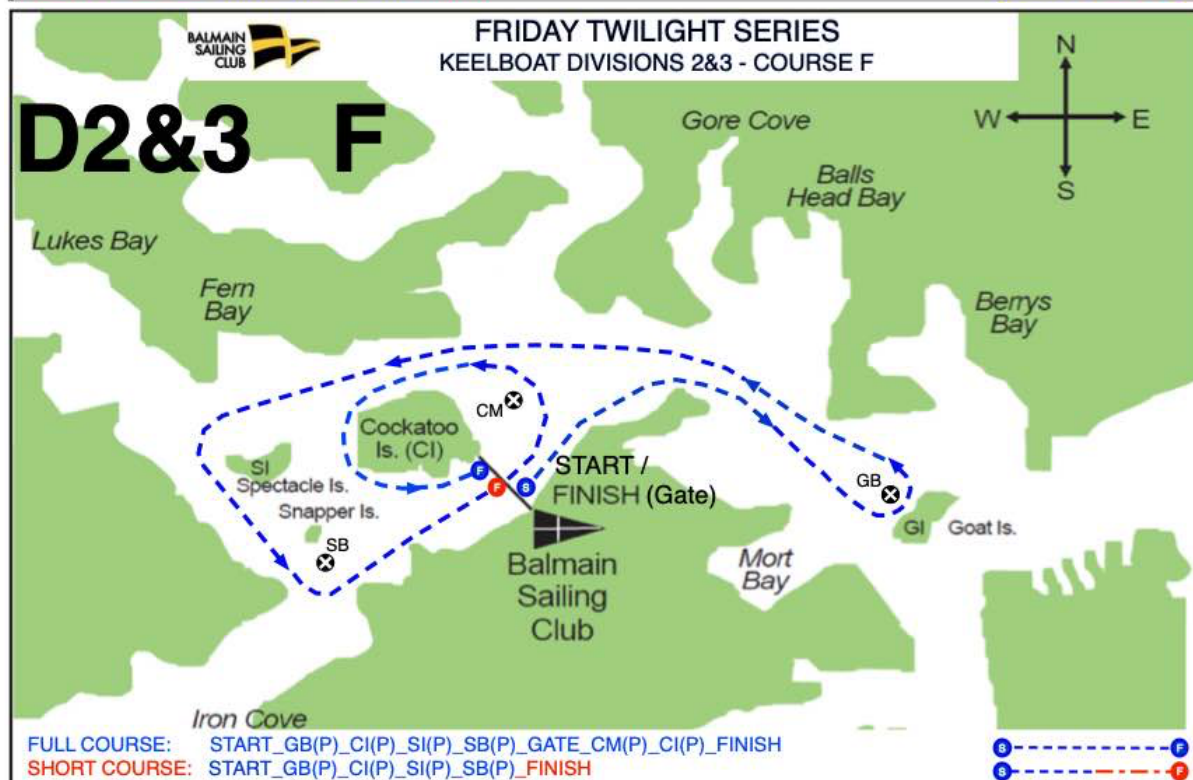
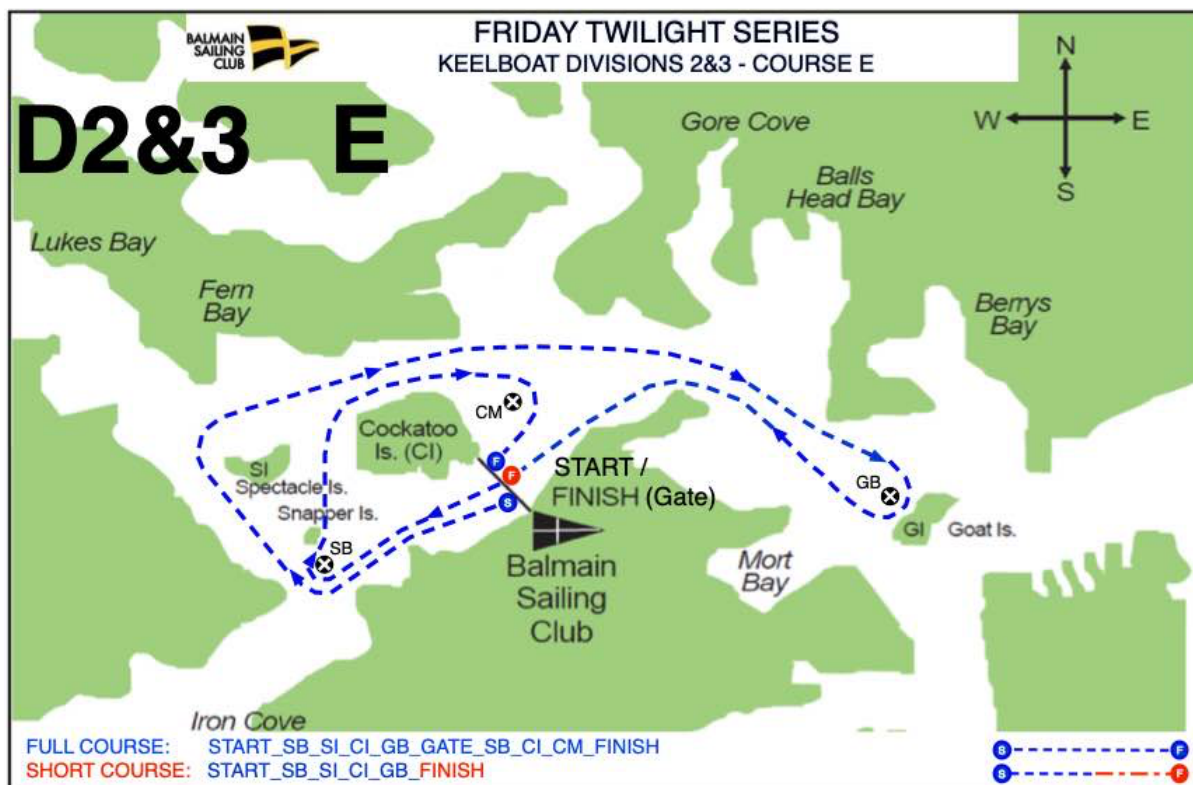
DIVISIONS 2 & 3 COURSES A & B



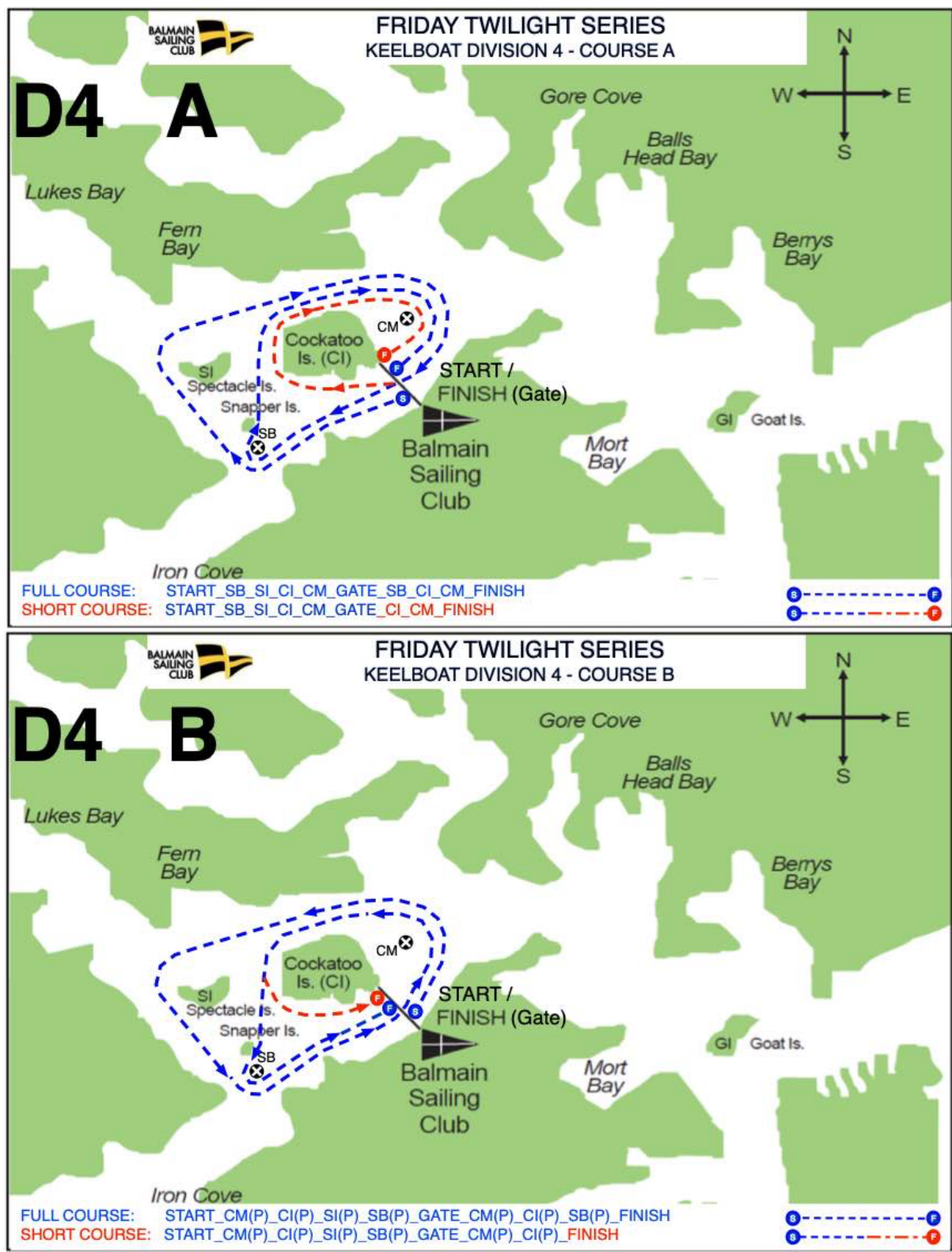
DIVISIONS 2 & 3 - COURSES C & D



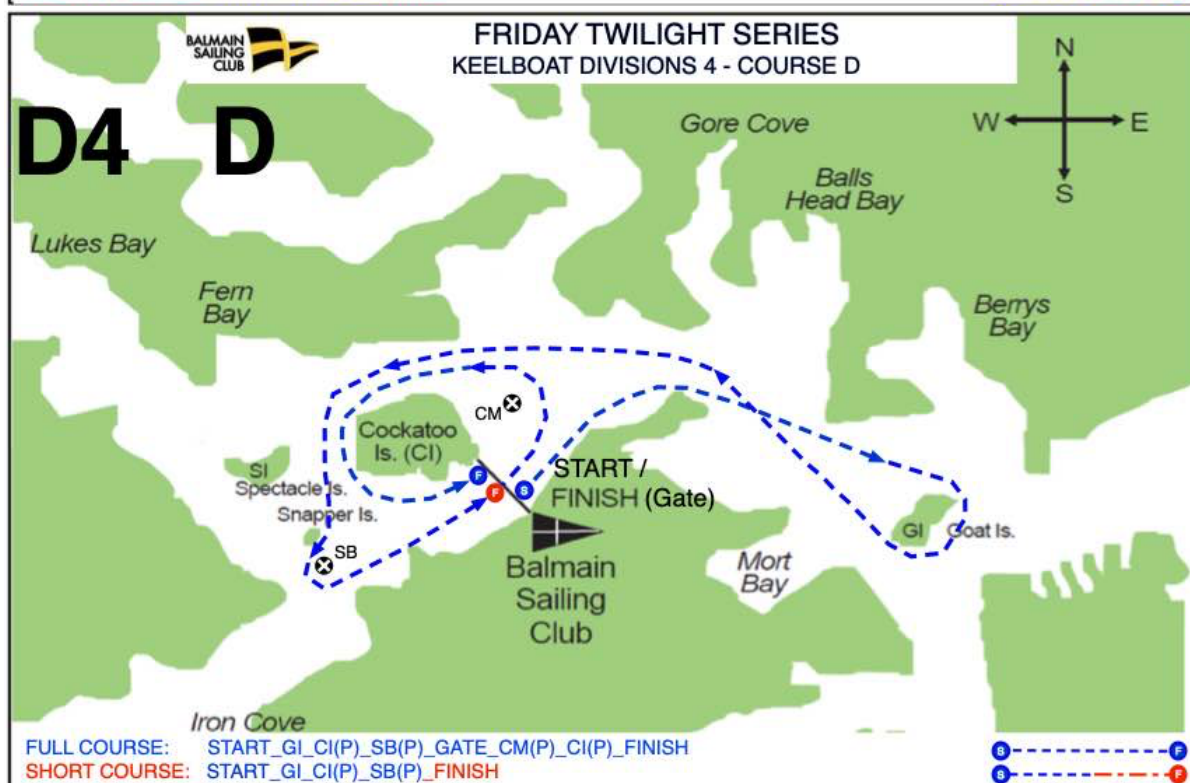
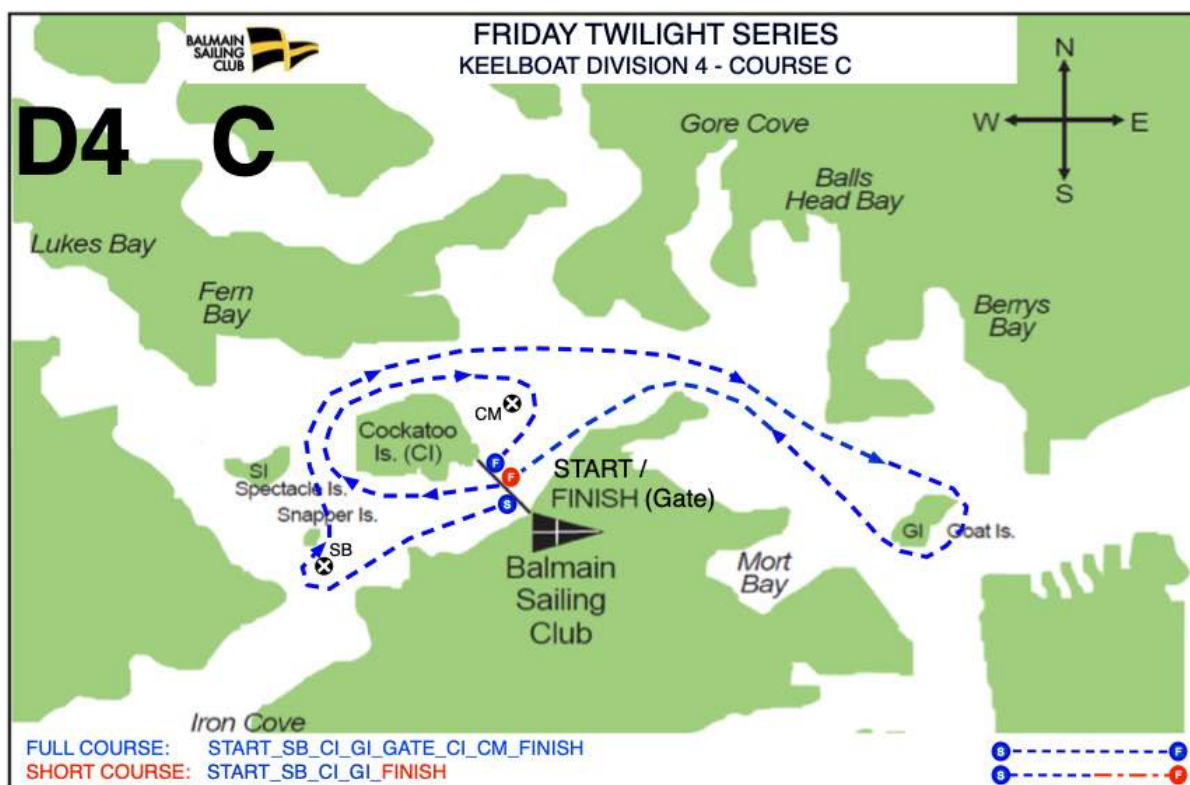
DIVISIONS 2 & 3 – COURSES E & F



DIVISION 4 – COURSES A & B



DIVISION 4 – COURSES C & D



DIVISION 4 – COURSES E & F

